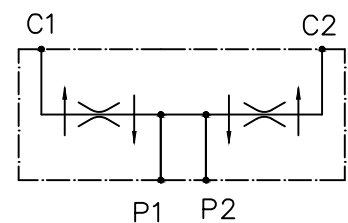




Ref. John Deere: DQ57766(DQ37007)

Pressão máxima: 400 Bar

Torque: 30/35 Nm



Material:		Tol. Geral:		Des.: ORV			
Dimensão Bruta:		Acab. Geral:		Apr.: Otavio			
Cementar:	Temperar:	 	Esc.: 1:1	Data: 10/12/14	Data:	Alterações:	
Control Star		Denominação: Válvula Divisora Fluxo 50/50			Código: 200163		Rev.: