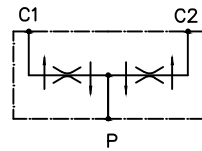
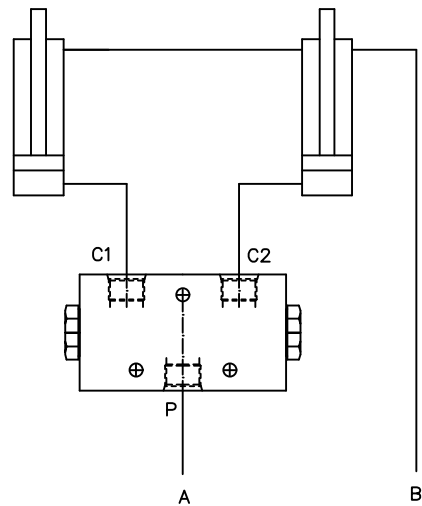




Pressão máxima: 400 Bar
 Vazão: 20 a 90 l/m
 Torque: 30/35 Nm



Instalação



Material:		Tol.Geral:		Des.: ORV				
Dimensão Bruta:		Acab.Geral:		Apr.: Otavio				
Cementar:	Temperar:			Esc.: 1:1	Data: 10/12/08	Data:	Alterações:	
Control Star		Denominação: Válvula Divisora Fluxo 50/50				Código: 200011		Rev.: